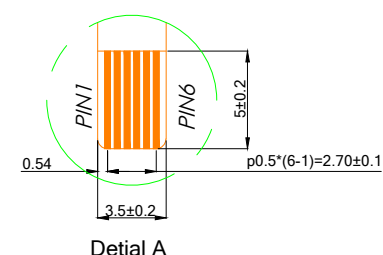
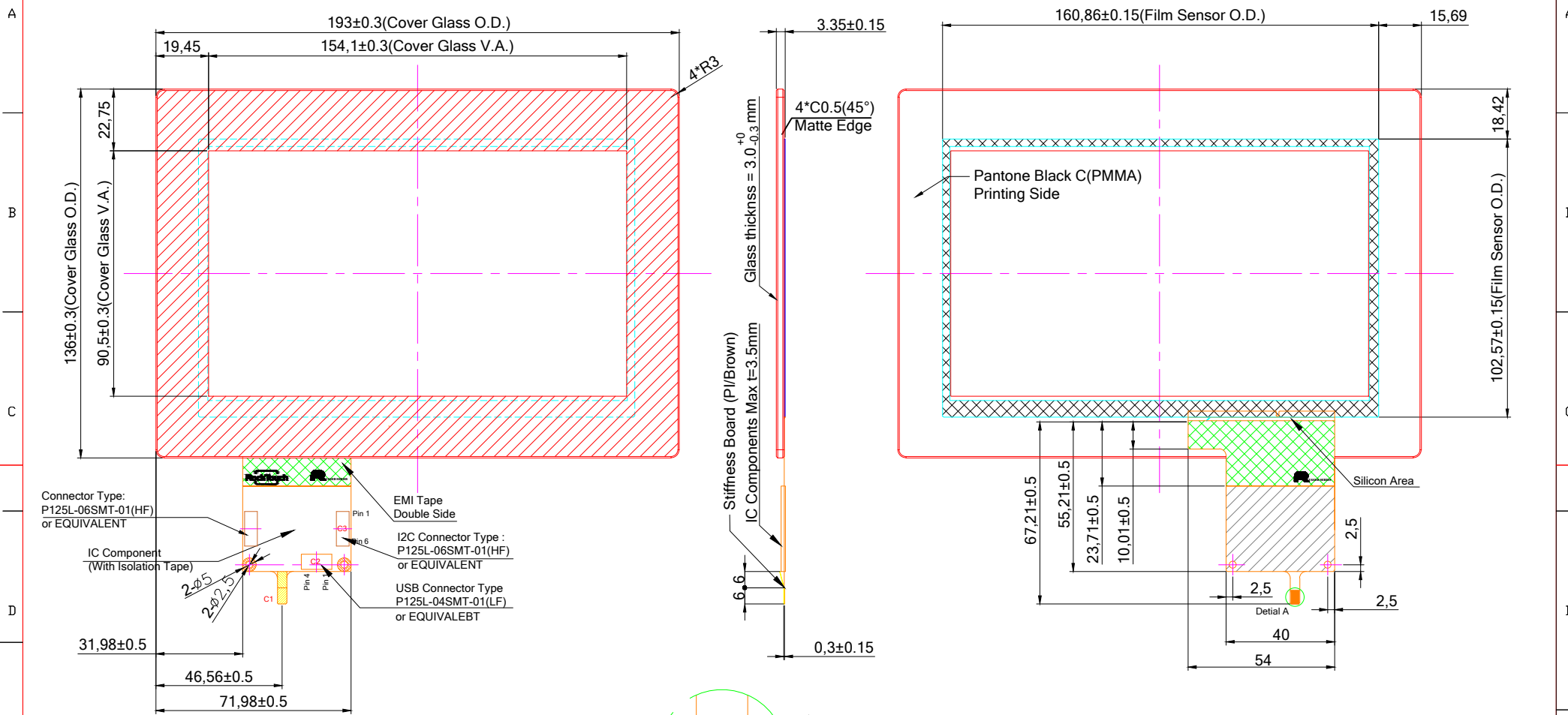


# Front VIEW

# Back VIEW



C1:USB Interface		C2: Pin Define for USB 4 pin		C3: Pin Define for I2C 6 pin	
Pin 01	VDD(5V)	Pin 01	GND	Pin 01	GND
Pin 02	D-	Pin 02	D-	Pin 02	SDA
Pin 03	D+	Pin 03	D+	Pin 03	SCL
Pin 04	GND	Pin 04	VDD	Pin 04	VDD(5V)
Pin 05	RST			Pin 05	INT
Pin 06	NC			Pin 06	RST

Customer Approval		Part Number		RTPC070W-R30BP1-C	
Date	Rev Date	Person	Description		
Company					
Name					
Signature	Date	Design By Date	Check By	Date	Approved By
	First Drawing	20190102	Jeff		

- Spec:
- General O.D. Tolerance :  ±0.3
  - Border Type :  Matte
  - Glass Type :  Semi-Tempered
  - Surface Treatment :  None
  - Background Printing :  PMMA  Color 1:Pantone Black C
  - Logo Printing :  None
  - Transmittance Level : >85%
  - Important Notes :

- Note:
- Distance between LCD and Touch need to have minimum 1 mm otherwise thinner dimension can cause noise problem between LCD and touch screen
  - If customer put a front conductive bezel all around we need to have minimum thickness of 2mm, if the thickness is lower can cause interference
  - Refer to the integration guide to avoid any integration noise issue
  - Before mass production customer needs to ask custom firmware for his final machine

Date \_\_\_\_\_ Drawing Number \_\_\_\_\_

