

## STRADA-C2

Beam for area and street lighting such as parks and pedestrian walkways. Assembly with installation tape.

### TECHNICAL SPECIFICATIONS:

Dimensions	19.6 x 15.5 mm
Height	5.9 mm
Fastening	tape, pin
ROHS compliant	yes ⓘ

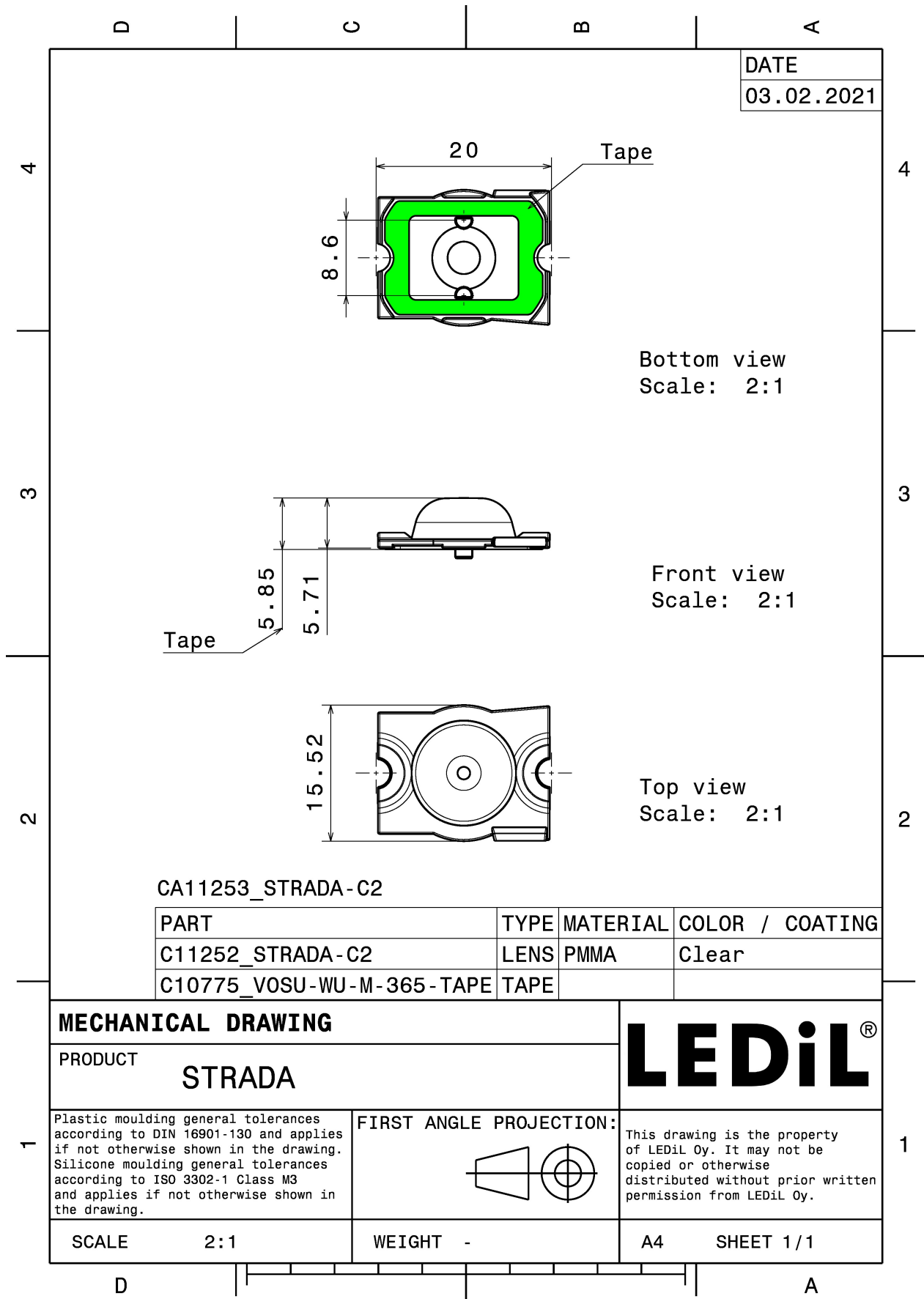


### MATERIAL SPECIFICATIONS:

Component	Type	Material	Colour	Finish
STRADA-C2	Single lens	PMMA	clear	
VOSU-WU-M-365-TAPE	Tape	Acrylic foam		

### ORDERING INFORMATION:

Component		Qty in box	MOQ	MPQ	Box weight (kg)
CA11253_STRADA-C2	Single lens	4320	240	240	4.1
» Box size: 450 x 260 x 200 mm					

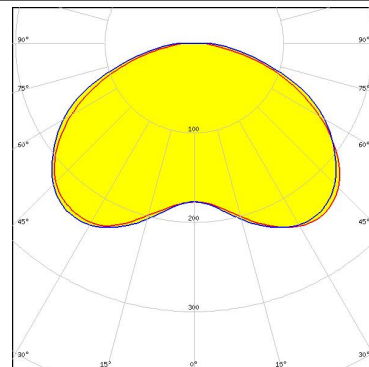


See also our general installation guide: [www.ledil.com/installation\\_guide](http://www.ledil.com/installation_guide)

#### PHOTOMETRIC DATA (MEASURED):



LED XB-D  
 FWHM / FWTM 135.0° / 175.0°  
 Efficiency 93 %  
 Peak intensity 0.3 cd/lm  
 LEDs/each optic 1  
 Light colour White  
 Required components:



LED XP-E  
 FWHM / FWTM 124.0°  
 Efficiency 92 %  
 Peak intensity 0.3 cd/lm  
 LEDs/each optic 1  
 Light colour White  
 Required components:



LED XP-G  
 FWHM / FWTM 132.0°  
 Efficiency 92 %  
 Peak intensity 0.2 cd/lm  
 LEDs/each optic 1  
 Light colour White  
 Required components:

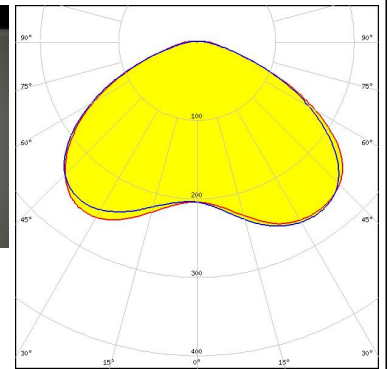


LED LUXEON A  
 FWHM / FWTM 128.0°  
 Efficiency 92 %  
 LEDs/each optic 1  
 Light colour White  
 Required components:

#### PHOTOMETRIC DATA (MEASURED):

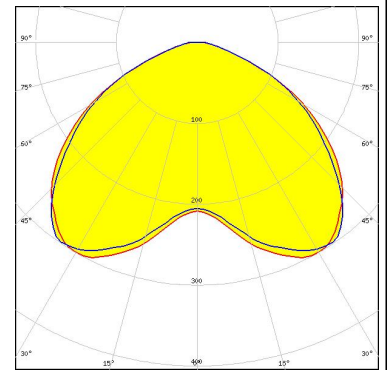
##### LUMILEDS

LED LUXEON R  
FWHM / FWTM 134.0° / 166.0°  
Efficiency 93 %  
Peak intensity 0.3 cd/lm  
LEDs/each optic 1  
Light colour White  
Required components:



##### LUMILEDS

LED LUXEON Rebel  
FWHM / FWTM 119.0°  
Efficiency 92 %  
Peak intensity 0.3 cd/lm  
LEDs/each optic 1  
Light colour White  
Required components:



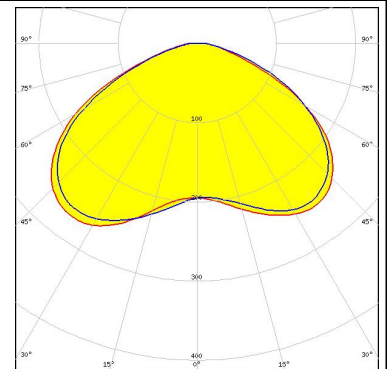
##### LUMILEDS

LED LUXEON Rebel ES  
FWHM / FWTM 128.0° / 162.0°  
Efficiency 92 %  
Peak intensity 0.2 cd/lm  
LEDs/each optic 1  
Light colour White  
Required components:

SetPlotAreaWidth(): X range error - min >= max

##### LUMILEDS

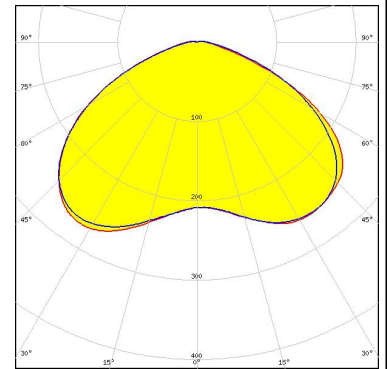
LED LUXEON T  
FWHM / FWTM 136.0°  
Efficiency 92 %  
Peak intensity 0.3 cd/lm  
LEDs/each optic 1  
Light colour White  
Required components:



#### PHOTOMETRIC DATA (MEASURED):

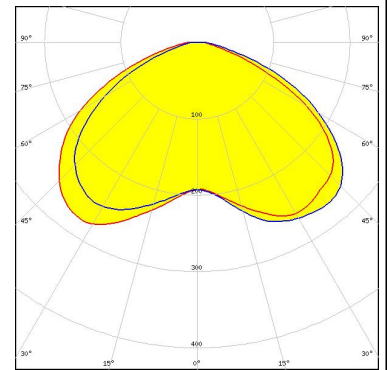
##### LUMILEDS

LED LUXEON TX  
FWHM / FWTM 134.0° / 165.0°  
Efficiency 94 %  
Peak intensity 0.3 cd/lm  
LEDs/each optic 1  
Light colour White  
Required components:



##### LUMILEDS

LED LUXEON Z ES  
FWHM / FWTM 136.0° / 165.0°  
Efficiency 93 %  
Peak intensity 0.3 cd/lm  
LEDs/each optic 1  
Light colour White  
Required components:

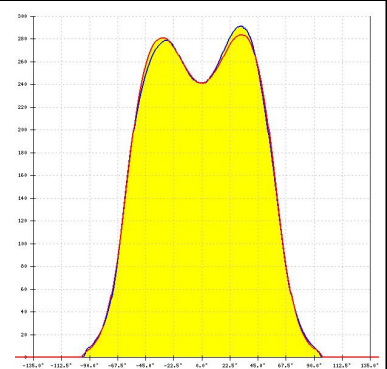


##### NICHIA

LED NCSxx19A  
FWHM / FWTM 124.0°  
Efficiency 92 %  
LEDs/each optic 1  
Light colour White  
Required components:

##### NICHIA

LED NVSW219D  
FWHM / FWTM 126.0° / 161.0°  
Efficiency 94 %  
Peak intensity 0.3 cd/lm  
LEDs/each optic 1  
Light colour White  
Required components:



### PHOTOMETRIC DATA (MEASURED):



LED NVSxx19A  
FWHM / FWTM 124.0°  
Efficiency 92 %  
LEDs/each optic 1  
Light colour White  
Required components:



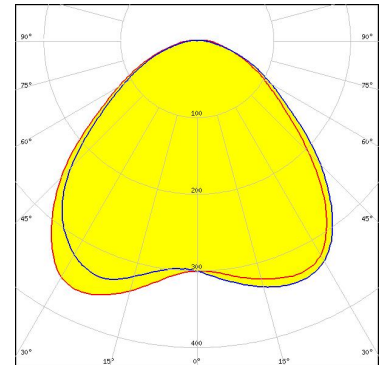
Opto Semiconductors

LED OSLON SSL 150  
FWHM / FWTM 92.0°  
Efficiency 92 %  
LEDs/each optic 1  
Light colour White  
Required components:



Opto Semiconductors

LED OSLON SSL 80  
FWHM / FWTM 107.0° / 158.0°  
Efficiency 93 %  
Peak intensity 0.4 cd/lm  
LEDs/each optic 1  
Light colour White  
Required components:



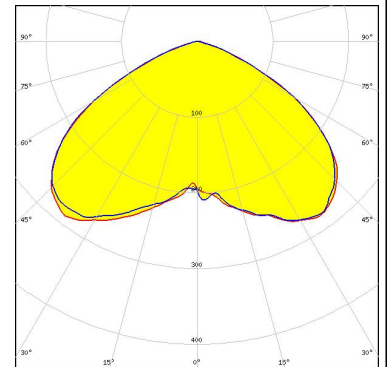
LED Double Dome (GM2BB)  
FWHM / FWTM 122.0°  
Efficiency 92 %  
LEDs/each optic 1  
Light colour White  
Required components:

#### PHOTOMETRIC DATA (SIMULATED):

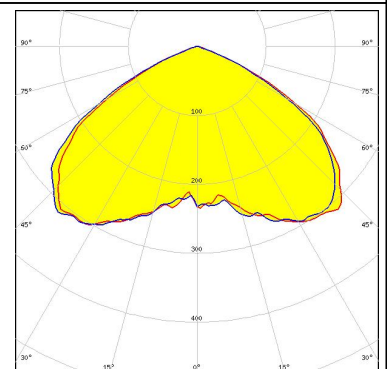


LED XP-E2  
FWHM / FWTM 122.0° / 146.0°  
Efficiency 88 %  
Peak intensity 0.3 cd/lm  
LEDs/each optic 1  
Light colour White  
Required components:

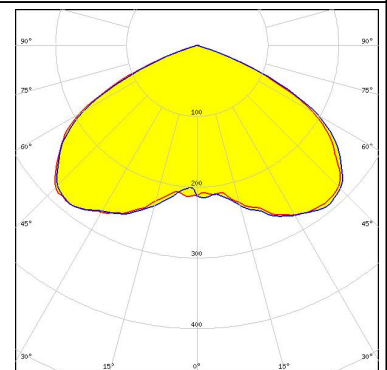
Protective plate, glass



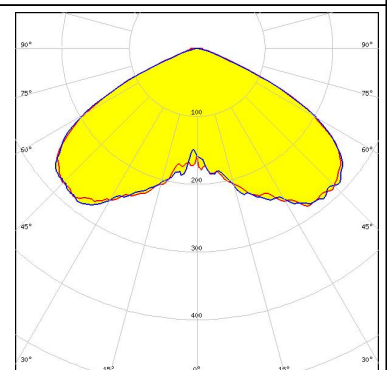
LED LUXEON H50-2  
FWHM / FWTM 121.0° / 138.0°  
Efficiency 92 %  
Peak intensity 0.3 cd/lm  
LEDs/each optic 1  
Light colour White  
Required components:



LED NVSW219F  
FWHM / FWTM 127.0° / 142.0°  
Efficiency 94 %  
Peak intensity 0.3 cd/lm  
LEDs/each optic 1  
Light colour White  
Required components:



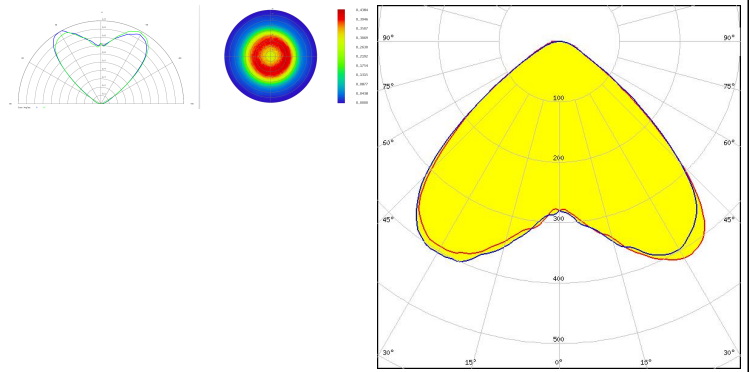
LED NVSxx19B/NVSxx19C  
FWHM / FWTM 124.0° / 144.0°  
Efficiency 94 %  
LEDs/each optic 1  
Light colour White  
Required components:



#### PHOTOMETRIC DATA (SIMULATED):

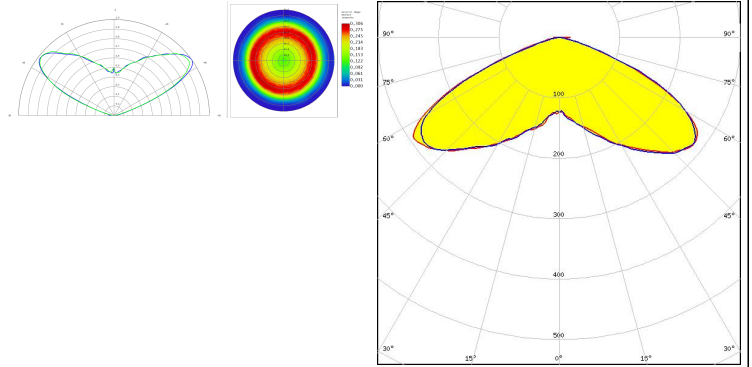
**OSRAM**  
Opto Semiconductors

LED SFH 4715AS  
FWHM / FWTM 100.0° / 128.0°  
Efficiency 96 %  
LEDs/each optic 1  
Light colour IR  
Required components:



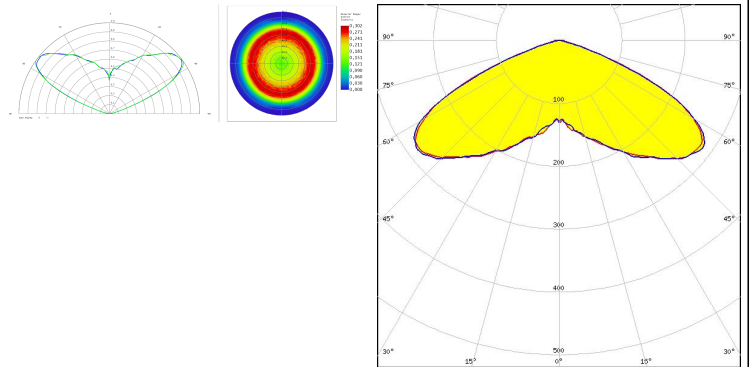
**OSRAM**  
Opto Semiconductors

LED SFH 4716AS  
FWHM / FWTM 134.0° / 153.0°  
Efficiency 96 %  
LEDs/each optic 1  
Light colour IR  
Required components:



**OSRAM**  
Opto Semiconductors

LED SFH 4716S  
FWHM / FWTM 134.0° / 150.0°  
Efficiency 96 %  
LEDs/each optic 1  
Light colour IR  
Required components:



SEOUL SEMICONDUCTOR

LED Z5  
FWHM / FWTM 122.0°  
Efficiency %  
LEDs/each optic 1  
Light colour White  
Required components:

### GENERAL INFORMATION:

NOTE: The typical beam angle will be changed by different color, chip size and chip position tolerance. The typical total beam angle is the full angle measured where the luminous intensity is half of the peak value.

### MATERIALS:

As part of our continuous research and improvement processes, and to ensure the best possible quality and availability of our products, LEDiL reserves the right to change material grades without notice.

### PRODUCT DATA USER AGREEMENT AND DISCLAIMER:

The measured data in the provided downloadable LEDiL Product Datasheets and Mechanical 2D-Drawings is rounded and provided as reference for planning. LEDiL Oy's optical specifications have been verified by conducting performance testing of the products in accordance with the company's quality system. The reported data are averaged results of multiple measurements with typical variation. LEDiL Oy reserves the right to without prior notification make changes and improvements to its products.

LEDiL Oy assumes neither warranty, nor guarantee nor any other liability of any kind for the contents and correctness of the provided data. The provided data has been generated with highest diligence but the provided data may in reality not represent the complete possible variation range of all intrinsic parameters. Therefore, in certain cases a deviation from the provided data could occur.

LEDiL Oy reserves the right to undertake technical changes of its products without further notification which could lead to changes in the provided data. LEDiL Oy assumes no liability of any kind for the possible deviation from any provided data or any other damage resulting from the usage of the provided data.

The user agrees to this disclaimer and user agreement with the download or usage of the provided files.

#### LEDiL Oy

Joensuunkatu 13  
FI-24240 SALO  
Finland

#### LEDiL Inc.

228 West Page Street  
Suite D  
Sycamore IL 60178  
USA

#### Ledil Optics Technology (Shenzhen) Co., Ltd.

# 405 , Block B  
Casic Motor Building  
Shenzhen 518057  
P.R.CHINA

#### Local sales and technical support

[www.ledil.com/  
where\\_to\\_buy](http://www.ledil.com/where_to_buy)

#### Shipping locations

Salo, Finland  
Hong Kong, China

#### Distribution Partners

[www.ledil.com/  
where\\_to\\_buy](http://www.ledil.com/where_to_buy)