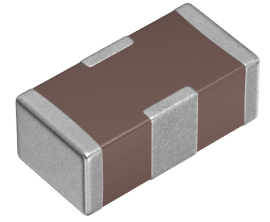


<b>Applications</b>	Automotive Grade
<b>Feature</b>	AEC-Q200
	For Power Line
<b>Series</b>	YFF
<b>Status</b>	Production
<b>Brand</b>	TDK



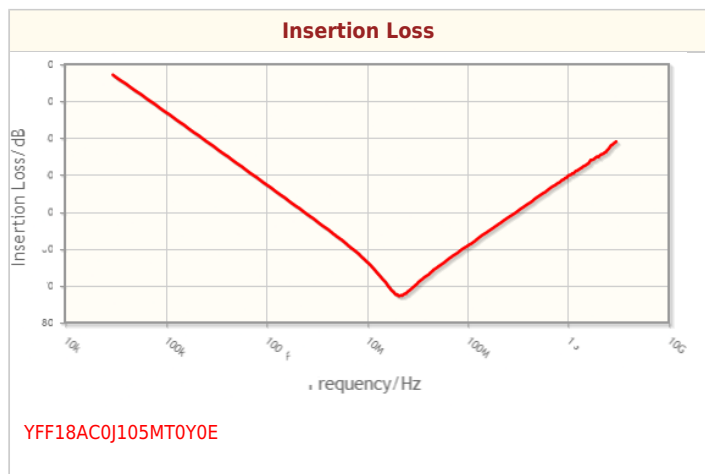
Size	
Length(L)	1.60mm ±0.20mm
Width(W)	0.80mm ±0.15mm
Thickness(T)	0.60mm ±0.10mm

Electrical Characteristics	
Insertion Loss [Typ.]	30dB (0.23MHz to 3GHz)
Cut-Off Frequency [Typ.]	
Rated Voltage [Max.]	6.3V
Rated Current [Max.]	2A
Rated Current Derating	
DC Resistance (Max.)	20mΩ
Rated Capacitance [Typ.]	1μF

Other	
Circuit Type	Feed Through Type
Transmission Line	Single-ended
Operating Temp. Range	-55 to 125°C
Soldering Method	Reflow
AEC-Q200	YES
Packing	Punched (Paper)Taping [180mm Reel]
Package Quantity	4000pcs
Weight	

! Images are for reference only and show exemplary products.  
! This PDF document was created based on the data listed on the TDK Corporation website.  
! All specifications are subject to change without notice.

Characteristic Graphs(This is reference data, and does not guarantee the products characteristics.)



! Images are for reference only and show exemplary products.  
! This PDF document was created based on the data listed on the TDK Corporation website.  
! All specifications are subject to change without notice.

## Associated Images

